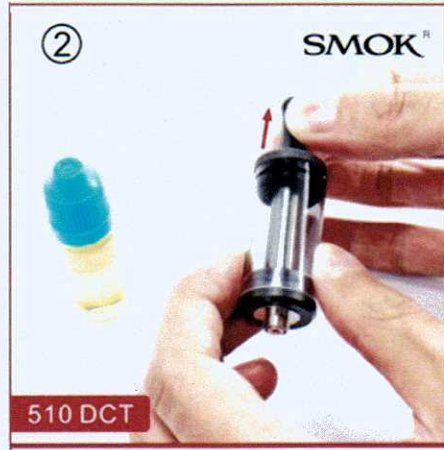




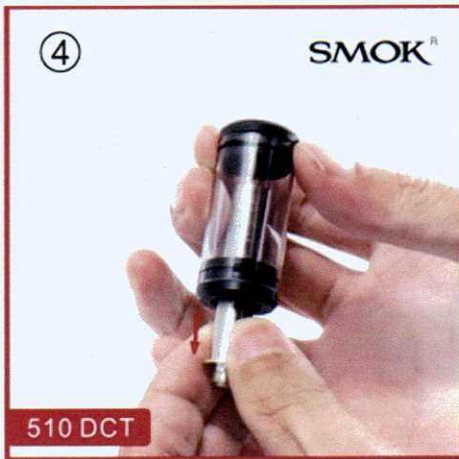
With your DC tank, have a bottle of your favorite flavor ready



Remove the driptip



Hold your tank at an angle and fully fill the cartomizer upon the pipe wall when first use;



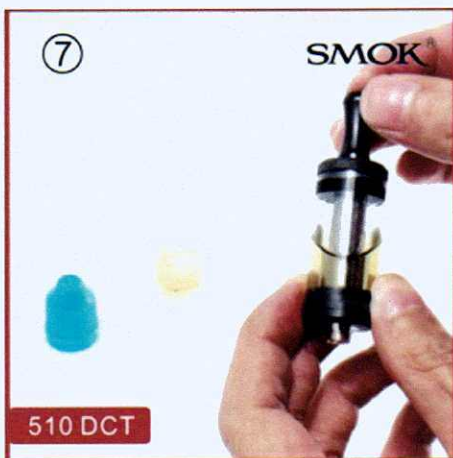
Slide the cartomizer down a short way into tank



Hold your tank at an angle and fill the tank around the cartomizer from the top.



Slide the cartomizer back up into place.



Replace the drip tip.



Let your new tank sit for a few minutes to "prime".



Enjoy your new Dual Coil Cartomizer Tank!